

Statement of Conformity with the Participation Statement

Background

In March 2016 SESplan, the Strategic Development Planning Authority for South East Scotland, published Development Plan Scheme number 8. This contained a Participation Statement which covered the Proposed Strategic Development Plan publication period for consultation.

This Statement of Conformity with the Participation Statement has been prepared to describe what actions SESplan took during preparation of the Proposed Strategic Development Plan in line with the Participation Statement.

Participation Statement

The Participation Statement set out how, when and with whom consultation on the Proposed Plan would take place. As set out in Planning Circular 6/2013: Development Planning, consultation is expected to be meaningful and authorities are to employ a range of techniques and activities for stakeholders which are tailored to local circumstances.

SESplan set out an overarching aim in the Participation Statement to:

'...raise awareness of Strategic Development Planning in SESplan while engaging and involving key stakeholders throughout the plan making process.'

In addition, SESplan set out thirteen objectives to achieve this aim and ensure engagement in the plan.

The pages overleaf set out the aims and objectives of the Participation Statement and how SESplan have achieved these.

Participation Statement

Aim and Objectives		
<p>'...raise awareness of Strategic Development Planning in SESplan while engaging and involving key stakeholders throughout the plan making process.'</p>		
1.	Develop awareness of SESplan through communication and promotion	✓
2.	Seek ways to engage with and involve key stakeholders throughout the whole process of producing the Strategic Development Plan	✓
3.	Make information available as early as possible	✓
4.	Produce information in an easy to use format	✓
5.	Ensure that arrangements for participation are as inclusive and open as possible	✓
6.	Offer the opportunity to be involved to as many stakeholders as possible	✓
7.	Make extensive use of electronic communication including our website, social media, consultation portal and those of our Local Authority partners, to promote plan awareness and encourage engagement	✓
8.	Build on existing partnerships and working relationships, for example with key agencies and regional economic groups, to facilitate greater input;	✓
9.	Develop individual strategies on how best to engage with key stakeholders, recognising the limitations of a one size fits all approach	✓
10.	Look to guidance, such as that provided by PAS (Planning Aid Scotland) and other resources, when completing and assessing our engagement plans and actions	✓
11.	Make our engagement plans public documents available before periods of engagement	✓
12.	Ensure material is written in clear, plain English with attractive and effective graphics	✓
13.	Communicate with stakeholders throughout the consultation process and provide updates as the plan progresses	✓

Key Proposed Plan Activities

SESplan have employed a range of techniques to promote the Proposed Plan to ensure coverage of different stakeholders and demographics. These have included:

- updating our website to become more user friendly and making it clear where people can access the Proposed Plan;
- use of social media in particular twitter to promote the plan at all stages (noting that our followers have significantly increased);
- use of posters in libraries and council buildings;
- emails and letters sent to everyone on the SESplan database (over 1000 individuals and groups);
- emails and letters sent to everyone on LDP databases of our member authorities;
- an attractive SESplan Proposed Plan leaflet was produced giving an 'easy read' explanation of what the plan did, who SESplan are, how and when to respond and how to contact us;
- over 250 Community Councils in the region sent an information pack containing a copy of the Proposed Plan, SESplan Proposed Plan leaflet and posters they could use;
- public events took place in each of the six member authorities including a drop-in session, presentation and Q&A. All documents and large format diagrams were made available and members of SESplan and LDP teams were in attendance to answer questions;
- three press releases, a press advert and notice on Tell Me Scotland were used to promote the publication of the plan;
- copies of the plan were made available in council offices and all libraries in the region; and,
- in addition, the Proposed Plan was made available on our website two months before publication started and we wrote to everyone who had previously responded to a SESplan consultation to let them know.

Best Practice

To aid engagement SESplan prepared and overarching Stakeholder Strategy and Proposed Plan Engagement Action Programme and made these publically available in advance of the publication of the plan. These looked at how we would engage with particular stakeholders. Comments on these documents were also invited.

SESplan also assessed the proposed actions of the Proposed Plan consultation against PAS's SP=EED principles to ensure the activities met with best practice advice.

Plan Production

- SESplan worked with A+DS to storyboard the plan to make it a concise, graphics based and well laid out document which would be easy to find information in. Specifically, we used colour coding to sections, produced a 'vision index' page aligning the content of the vision with the content of the plan and produced a series of infographics;
- Diagrams and maps were produced with the aim of using a consistent format that was attractive and conveyed complex spatial planning information in an understandable way;
- SESplan worked to plain English guidance on writing to ensure the text could be as accessible as it could be;
- Formal policy boxes were taken out to avoid unnecessary repetition and improve the narrative and flow of text.

Proposed Plan Consultation

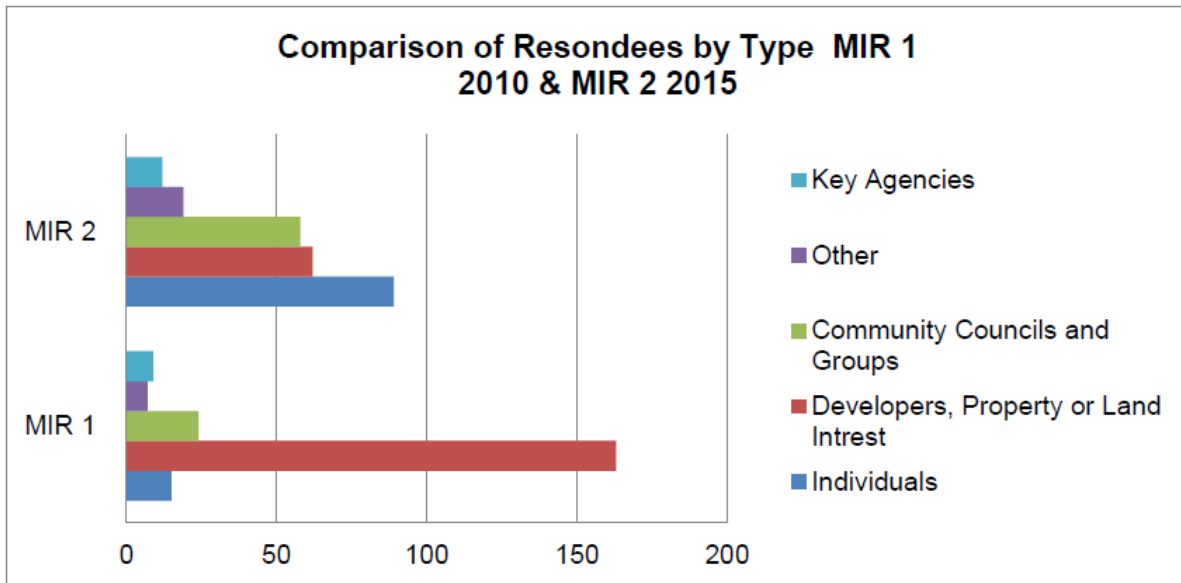
SESplan's consultation during the preparation of the proposed plan took the form of three stages. This included early engagement through a survey prior to the Main Issues Report in 2014, an extended period of consultation including public events for the Main Issues Report in 2015 and further public events as part of the Proposed Plan Publication in 2016. Meetings and workshops also took place throughout the period with Key Agencies and other stakeholders.

Consultation Stages

What	How	When
'Influence the Plan' early engagement	Online survey based poll asking seven questions using radio buttons and free text boxes.	Six weeks - April to May 2014
Main Issues Report	Extensive consultation period with 26 public events, online consultation portal and Easy Read Guide.	Ten weeks – July to September 2015
Proposed Strategic Development Plan	Formal consultation period with 6 public events, online consultation portal.	Six weeks – October to November 2016

Key Achievements

SEsplan have succeeded in increasing the number of individuals and community groups who have made comment on Plan documents or attended consultation events. It is considered that this increased engagement demonstrates that the general public have become more aware of the SDP and SEsplan than when SDP1 was prepared.



Conclusion

It is considered that SEsplan have successfully achieved the aims and objectives of the Participation Statement as set out with Development Plan Scheme. SEsplan have used a variety of innovative as well as well tested methods of engagement and have exceeded minimum requirements at all stages in the preparation of the replacement Strategic Development Plan.

APPENDICES

- **Appendix 1: List of Public Events and Photographs**
- **Appendix 2: Event Posters**
- **Appendix 3: Proposed Plan Leaflet**
- **Appendix 4: Proposed Plan Infographoc**
- **Appendix 5: Newspaper Adverts**
- **Appendix 6: Main Issues Report Leaflet and Easy Read Guide (including infographic)**

Appendix 1: List of Public Events - Proposed Plan

Event:	Venue:	Date & Time:
Consultation Drop-in, Presentation and Q&A	City Chambers, Kirkgate, Dunfermline	Monday 24 th October 2016 3pm-8pm
Consultation Drop-in, Presentation and Q&A	Lasswade Centre, Eskdale Drive, Midlothian	Wednesday 26 th October 2016 3pm-8pm
Consultation Drop-in, Presentation and Q&A	West Lothian Civic Centre, Howden South Road, Livingston	Thursday 3 rd November 2016 3pm-8pm
Consultation Drop-in, Presentation and Q&A	City Chambers, High Street, Edinburgh	Monday 7 th November 2016 3pm-8pm
Consultation Drop-in, Presentation and Q&A	Brunton Theatre, Ladywell Way, Musselburgh	Wednesday 9 th November 2016 3pm-8pm
Consultation Drop-in, Presentation and Q&A	Council Headquarters, Bowden Road, Newtown St. Boswells	Thursday 10 th November 2016 3pm-8pm

List of Public Events - Main Issues Report

Event:	Venue:	Date & Time:
Public Drop-In	Town House, High Street, Haddington	Thursday 30 th July 2015, 3-7pm
Community Council Event - Presentation and Q&A	Town House, High Street, Haddington	Tuesday 4 th August 2015, 6.30-8.30pm
Public Drop-in	Brunton Hall, Ladywell Way, Musselburgh	Wednesday 5 th August 2015, 3-7pm
Public Drop-in	Drumbrae Library, Drum Brae Drive, Edinburgh	Thursday 6 th August 2015, 3-7pm
Public Drop-in	West Lothian Civic Centre, Howden South Road, Livingston	Monday 10 th August 2015, 2-7pm
Community Council - Presentation and Q&A	Dalkeith Arts Centre, White Hart Street, Dalkeith	Tuesday 18 th August 2015, 5-7pm
Fife Council Public Drop-in	Dunfermline City Chambers, Kirkgate, Dunfermline	Thursday 20 th August 2015, 3-7pm
Community Council	Burgh Halls, The Cross,	Thursday 20 th August

event - Presentation and Q&A	Linlithgow	2015, 6-8pm
Community Council event - Presentation and Q&A	St Thomas Church Hall, Glasgow Road, Edinburgh	Monday 24 th August 2015, 6-8pm
CEC Staff Briefing	Waverley Court, East Market Street, Edinburgh	Tuesday 25 th August 2015, am
Elected Members Briefing Meeting	Council Chambers, Newtown Street, Duns	Wednesday 26 th August 2015, 2pm
Scottish Borders Community Councils - Presentation and Q&A	Council Chambers, Newtown Street, Duns	Wednesday 26 th August 2015, 6.30-8.30pm
Community Council - Presentation and Q&A	Waverley Court, East Market Street, Edinburgh	Thursday 27 th August 2015, 6-8pm
Elected Members Briefing Meeting	Fife House, North Street, Glenrothes	Monday 31 st August 2015, pm
Community Council event - Presentation and Q&A	Partnership Centre, South Bridge Street, Bathgate	Tuesday 1 st September 2015, 6-8pm
Community Council event - Presentation and Q&A	Portobello Town Hall, Portobello High Street, Edinburgh	Wednesday 2 nd September 2015, 6-8pm
Community Council event - Presentation and Q&A	Waverley Court, East Market Street, Edinburgh	Thursday 3 ^{rs} September 2015, 6-8pm
A Place for Communities Public Seminar	Chartered Institute of Housing, Princes Street, Edinburgh	Friday 4 th September 2015, 9.30am-1pm
Community Planning Partnership Event	Gibson Craig Hall, Lanark Road West, Currie	Monday 7 th September 2015, 2-5pm
Community Council event - Presentation and Q&A	Gibson Craig Hall, Lanark Road West, Currie	Monday 7 th September 2015, 6-8pm
Community Councils Meeting - Presentation and Q&A	Council Headquarters, Bowden Road, Newtown St. Boswells	Tuesday 8 th September 2015, 6.30-8.30pm
Place to do Business Public Seminar	Scottish Enterprise, Apex House, Haymarket Terrace, Edinburgh	Tuesday 8 th September 2015, 1.30-4.30pm
Community Council event - Presentation and Q&A	Business Centre, City Chambers, High Street, Edinburgh	Wednesday 9 th September 2015, 6-8pm
Community Councils and Public event - Presentation and Q&A	Council Chambers, Rosetta Road, Peebles	Thursday 10 th September 2015, 6.30-8.30pm


A Better Connected Place Public Seminar	City Chambers, High Street, Edinburgh	Monday 14 th September 2015 9.30am-1pm
Public Drop-in	Inverkeithing Civic Centre, Queen Street, Inverkeithing	Monday 14 th September 2015, 3-7pm
Public Drop-in	Lasswade High School, Eskdale Drive, Midlothian	Wednesday 16 th September 2015, 3-7pm
Midlothian Federation of Community Councils event - Presentation and Q&A	Middleton Village Hall, Borthwick Castle Terrace, Midlothian	Wednesday 16 th September 2015, 7pm



Photographs from consultation events (L-R):


Event set up Inverkeithing; Promotional banners Waverley Station, Edinburgh; Place for Communities Public Seminar featuring Malcom Fraser; map voting and comments Haddington; Breakout discussions Place to do Business Public Seminar and Public drop-in discussions Musselburgh.

Appendix 2: Event Posters



Proposed Strategic Development Plan

Consultation 13 October - 24 November 2016




SESplan sets a vision for housing, transport and green infrastructure across the region over the next 20 years.

You can read the plan online at www.sesplan.gov.uk, in local libraries and local planning offices or you can come and talk to us at one of our events:

- Monday 24 October**, City Chambers, **Dunfermline**
- Wednesday 26 October**, Lasswade Centre, **Bonnyrigg**
- Thursday 3 November**, West Lothian Civic Centre, **Livingston**
- Monday 7 November**, City Chambers, **Edinburgh**
- Wednesday 9 November**, Brunton Theatre, **Musselburgh**
- Thursday 10 November**, Council Headquarters, **Newtown St. Boswells**

All events open to everyone. Drop-in 3pm to 6.30pm or come along for the presentation with Q&A at 6.30pm (please note spaces may be limited for the presentation, so let us know if you want to come along using the contact details below).

For more information and how to respond to the plan, please visit www.sesplan.gov.uk, email contactus@sesplan.gov.uk or call us on 01506 282883.


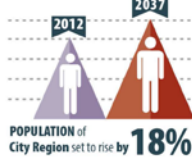
SESplan Main Issues Report Consultation

Over the next 20 years the Edinburgh and South East Scotland region faces some important challenges –

- **Population and household growth;**
- **Environmental concerns; and**
- **Infrastructure constraints.**

You can speak to the SESplan team about these challenges at:

Drumbrae Library
Edinburgh
3-7pm


A Place for Communities

Seminar Event: Featuring Nicola Barclay, Homes for Scotland; Craig McLaren, Director RTP1 Scotland; Dairmuid Lawler, Architecture and Design Scotland

Friday 4th September 2015
Chartered Institute for Housing, 125 Princes Street, Edinburgh
9.30am to 1pm

Last few places available - email: contactus@sesplan.gov.uk



Appendix 3: Proposed Plan Leaflet


A guide to the publication of the Edinburgh and South East Scotland **Proposed Strategic Development Plan**



13 October to 24 November 2016



About SESplan
SESplan is the Strategic Development Planning Authority for the Edinburgh and South East Scotland city region. It is made up of six council areas: City of Edinburgh, East Lothian, Midlothian, West Lothian, the Scottish Borders and the southern half of Fife.



SIX authorities make up the Edinburgh and South East Scotland Region

Strategic Development Plans
SESplan's role is to prepare a Strategic Development Plan every five years which sets out a vision for the long-term development of the region and deals with cross-boundary issues such as housing, green networks and transport.

As shown in the timeline (centre), the last Strategic Development Plan came into force in 2013 and needs to be replaced by 2018.

SESplan have now prepared a Proposed Strategic Development Plan, a key step in the process of replacing the current plan. The Proposed Strategic Development Plan is, in effect, a draft plan which represents SESplan's view on what we think the final content should be.

2013 Strategic Development Plan 1 approved by Scottish Government

2015 Main Issues Report published in advance of Strategic Development Plan 2

2016 Proposed Strategic Development Plan 2 published

2017 Proposed Strategic Development Plan 2 to be submitted to Scottish Government

2018 Expected approval of Strategic Development Plan 2 by Scottish Government

Local Development Plans
Local Development Plans, produced in the region's six council areas, must be consistent with the Strategic Development Plan. The current Local Development Plans in the region were prepared in line with the first Strategic Development Plan of 2013. The Proposed Strategic Development Plan, likely to come into force in 2018, will set the direction for Local Development Plans in the future.

Publication and Consultation
Publication of the Proposed Strategic Development Plan is, in most cases, the final consultation stage where public comments can be made. It is therefore important that everyone has the opportunity to comment on the content of the Proposed Strategic Development Plan prior to the plan being submitted to the Scottish Government for consideration.

More information on how you can comment can be found the back of this leaflet.

The Proposed Strategic Development Plan has been written after careful consideration of the responses to the Main Issues Report in 2015, other background evidence as set out in supporting documents and input from SESplan's six member local authorities.

The inside pages of this leaflet give an overview of the issues covered by the plan.

How to comment
As part of the publication of the Proposed Strategic Development Plan we are inviting comments, known as representations, on the content of the Proposed Plan.

You can make representations on the Proposed Plan from **Thursday 13 October to Thursday 24 November 2016 at 5pm**.

If you wish to submit a representation, this can be done using the on-line SESplan consultation portal:

sesplan-consult.objective.co.uk

In line with Scottish Government guidance, representations should be limited to no more than 2,000 words per issue - though you may submit representations on multiple issues.

How to find out more
The Proposed Strategic Development Plan, supporting documents and further details on how to submit a representation can be viewed on our website:


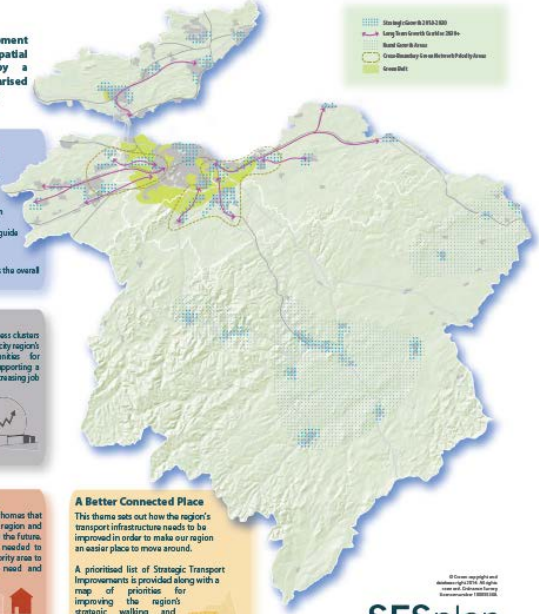
www.sesplan.gov.uk

Copies of the Proposed Strategic Development Plan are also available in public libraries and local planning authority offices in the region, and at the SESplan office:

SESplan, Civic Centre, Howden South Road, Livingston, West Lothian EH54 6FF.

You can contact us at contactus@sesplan.gov.uk or by calling 01506 282883.

In addition you sign up to our mailing list via the website, follow us on Twitter @SESplan or like us on Facebook

The Strategic Development Plan sets out a Spatial Strategy supported by a policy approach summarised under three key themes:


The Spatial Strategy
This sets out where most growth will happen over the next 12 years and provides a broad indication of where growth should be directed beyond 2030. It identifies the two Cross-Boundary Green Network Priority Areas and sets out a number of Placemaking Principles to guide Local Development Plans and planning decisions. The adjacent Key Diagram represents the overall Spatial Strategy.

A Place to do Business
This theme identifies a series of business clusters identified for their contribution to the city region's economy. They provide opportunities for continued growth and expansion supporting a growing sustainable economy and increasing job opportunities. The theme also considers the low carbon economy, energy generation and how we manage the region's resources.

A Place for Communities
This theme sets out the number of homes that are needed for those living in the region and to support population growth into the future. It provides estimates of the land needed to deliver housing in each Local Authority area to meet the region wide housing need and demand. This theme also sets out how well-planned green networks and thriving town centres can underpin successful places.

A Better Connected Place
This theme sets out how the region's transport infrastructure needs to be improved in order to make our region an easier place to move around. A prioritised list of Strategic Transport Improvements is provided along with a map of priorities for improving the region's strategic walking and cycling network.

Supporting Documents
Alongside the Proposed Strategic Development Plan a number of accompanying documents are also published. These include:
Action Programme: This lists the specific actions needed to be delivered the intended outcomes of the plan
The Environmental Report: A report of the Strategic Environmental Assessment of the plan
Record of Habitats Regulations Appraisal: An appraisal of the impact of the plan on European protected areas
Housing Background Paper: This sets out the evidence that underpins the approach to housing delivery in the plan
EqHRA: A summary of an assessment to ensure equality and human rights considerations are embedded in the plan
Strategic Flood-risk Assessment: This sets out how SESplan has considered existing and potential flooding issues
Green Network Technical Note: This explains the approach to green networks and the strategic walking and cycling network
Transport Appraisal: This identifies the impacts on the transport network
 All documents can be viewed online at www.sesplan.gov.uk.



Appendix 4: Proposed Plan Infographic

SESplan Assets

Distinctive Heritage and Culture

Home to over half of the top **20 most visited attractions in Scotland** and 1 in the UK top **10**



Festival City – Edinburgh hosts the largest annual cultural festival in the world. Generating over **£260 million** in the Scottish economy

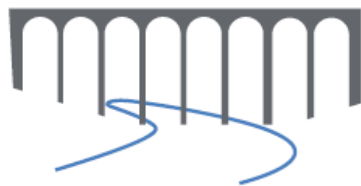
2 UNESCO World Heritage Sites - Old and New Towns of Edinburgh



and the **Forth Rail Bridge**

A World Class Environment

2 National Scenic Areas - Eildon & Leaderfoot and Upper Tweedale



Tweed Valley Forest Park - including Glentress Mountain Biking Centre

Pentland Hills Regional Park - Edinburgh's Playground & **Lomond Hills Regional Park -** Fife's Playground



3 National Nature Reserves - Blawhorn Moss, Whitlaw Mosses & St Abb's Head

A Smart Economy

City Region contributes over **£33 billion** of Gross Added Value to Scotland's economy. **26%** of the country's output



Edinburgh is the **2nd most prosperous** city in the UK (2013)



31.7% working age population educated to degree or equivalent level (Scotland 26.4%)
Home to **4** major universities

Scotland's Golf Coast
Musselburgh to Dunbar

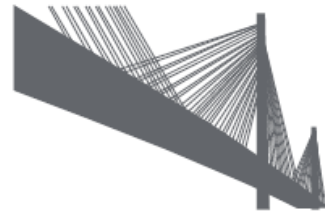


Over **20 Natura Sites** - Protected Areas of European Importance including most of the **Firth of Forth Coast and Islands**



The city is a **centre for excellence** for financial services and the region is one of the UK's **leading technology hubs**

Advanced Engineering and Infrastructure



The Queensferry Crossing is the longest three-tower, cable-stayed bridge in the world and the **tallest bridge in UK**.



Borders Railway - **longest domestic railway** constructed in Britain for over **100 years**



Edinburgh Airport Scotland's Busiest Airport with over **11 million** passengers

A Region of Opportunities

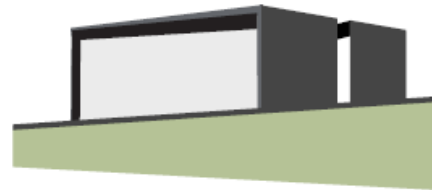


Rosyth Large freight handling capacity

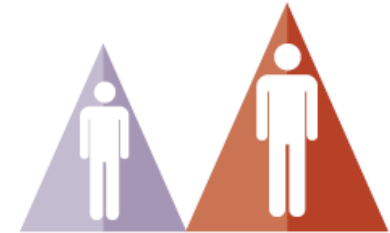


Generous Housing Land Supply

Diverse land for business in great locations



Serviceable **ports** to support offshore **renewables**



POPULATION of City **Region** set to rise by **18%** by 2038



City Region contains **23.8%** of the Scottish Population

**NOTICE OF PUBLICATION OF
PROPOSED STRATEGIC DEVELOP-
MENT PLAN
THE TOWN AND COUNTRY PLAN-
NING (DEVELOPMENT PLANNING)
(SCOTLAND) REGULATIONS 2008
& THE ENVIRONMENTAL ASSES-
SMENT (SCOTLAND) ACT 2005**

SESplan, Strategic Development Planning Authority covering the local authority areas of City of Edinburgh, East Lothian, Fife (south), Midlothian, the Scottish Borders and West Lothian, has prepared a Proposed Strategic Development Plan (SDP). The Proposed SDP sets out a vision for long term development and deals with issues such as housing and infrastructure.

The Proposed SDP and the accompanying Environmental Report can be viewed online at www.sesplan.gov.uk, in public libraries and Local Authority planning offices in the region and at the SESplan office: SESplan, Civic Centre, Howden South Road, Livingston EH54 6FF.

Representations can be made during the Publication period from 10am 13 October to 5pm 24 November 2016. Representations can be submitted in writing to SESplan using the consultation portal on the SESplan website or to the address above. For further information email contactus@sesplan.gov.uk or call 01506 282883.

**NOTICE OF PREPARATION OF MAIN
ISSUES REPORT
THE TOWN AND COUNTRY PLANNING
(DEVELOPMENT PLANNING)
(SCOTLAND) REGULATIONS 2008**

SESplan the Strategic Development Planning Authority for Edinburgh and South East Scotland (Edinburgh, East Lothian, Midlothian, Fife, Scottish Borders and West Lothian) has prepared a Main Issues Report (MIR) and will undertake a consultation between 21 July and 30 September 2015. The MIR can be viewed on the website: www.sesplan.gov.uk and in public libraries, local planning authority offices and at the SESplan office: Civic Centre, Howden South Road, Livingston, EH54 6FF.

**THE ENVIRONMENTAL ASSESSMENT
(SCOTLAND) ACT 2005**

SESplan has prepared an Interim Environmental Report for the MIR. It is available to view at www.sesplan.gov.uk and planning authority offices.

Responses to both documents can be made through the SESplan Consultation Portal or in writing to the address above. All responses must be made by 5.00pm on 30 September 2015.

Further information is available on the SESplan website or contacting 01506 282883.

Appendix 6a: Main Issues Report Leaflet and Easy Read Guide

SESplan

The Strategic Development Planning Authority for Edinburgh and South East Scotland

Six authorities make up the Edinburgh and South East Scotland Region

SESplan Region in Numbers

POPULATION of City Region set to rise by **18%** by 2037

HOUSEHOLD GROWTH by 2037 predicted average household size 2.38 people

25% of population aged 65+

City Region contains **23.8%** of the Scottish Population

Over **42,000** registered businesses in the City Region

24,900 additional jobs projected by 2030

54% of the city's workforce educated to degree level

City of Edinburgh has **51%** of all employment in the region

40.3% of electricity is generated by renewable or low carbon sources

44% recycling rate

there are **13** local Nature Hotspots, **10** Country Parks, **11** Special Areas of Conservation, **2** National Nature Reserves, and **1** National Nature Scenic Area

more than **50%** of the City Region is rural

11 of the top 20 most visited attractions in Scotland are in the City Region

Jobs, homes and investment where, why and how?

Over the next 20 years the Edinburgh and South East Scotland Region faces some important challenges -

- population and household growth,
- environmental concerns
- and infrastructure constraints.

The SESplan Main Issues Report is a document which explores some of these challenges.

What is SESplan?

SESplan is the Strategic Development Planning Authority for the Edinburgh and South East Scotland region.

SIX authorities make up the Edinburgh and South East Scotland Region

SESplan prepare a Strategic Development Plan for the South East Scotland City Region. This is a planning document which covers the next 20 years and beyond. It is used to inform each Council's Local Development Plan. The Main Issues Report is the first stage in preparing a new Plan. The responses to the Main Issues Report will form the basis for preparation of the next Strategic Development Plan.

We encourage everyone interested in shaping the future of the region to take the opportunity to tell us what you think.

The Issues

The SESplan Main Issues Report is a consultation document. It presents a series of issues and options about current and future planning challenges in the Edinburgh and South East Scotland Region and suggests how to address them. 15 issues along with key questions are set out under the following themes:

Spatial Strategy:

Where can growth be accommodated in the region? Should most new housing development be focussed around the city or should it be spread across the region?

Concentrated Growth **Distributed Growth**

A Place to do Business:

How can employment and business growth be supported?
How can the economies of all parts of the region – the city, the towns, and rural area be supported?

A Place for Living:

Is it reasonable to re-use brownfield sites in other towns to link up sites in Edinburgh?
What areas should be prioritised for investment?

A Better Connected Place:

How can we ensure development is located to encourage sustainable travel?
With restricted funding, what infrastructure projects should we prioritise?

Delivery:

How do we fund new development?
Should member authorities work together on strategic infrastructure?

What does SESplan mean for each area?

- Edinburgh:** How many houses should we plan to build and where can they go? What does development mean for the Green Belt? How can we support investment, business and tourism? How do we ensure new development is supported by sustainable transport modes?
- West Lothian:** Should West Lothian accommodate some of the housing demand for Edinburgh, given the close transport connections to the city? How can we continue to support business and employment opportunities in the area? What infrastructure is required to deliver the plan?
- Midlothian:** Should the Borders rail links justify further housing development? How can we ensure the vitality of town centres in Midlothian? What does mean for the Green Belt in Midlothian?
- East Lothian:** Should East Lothian take additional houses to accommodate demand that arises from the city? How can we support growth and investment in East Lothian? Are the transport priorities right?
- Scottish Borders:** Should we build more housing in the Borders to support growth? How can we best support new employment opportunities arising from the Borders Rail Link? How can we support the economy of towns and rural areas?
- Fife:** Should Fife accommodate any housing demand from Edinburgh that cannot be met within the city? Should most new development be focussed in the Dunfermline area or spread further? How can we support business and growth sectors? What are the key transport priorities?

Further information:
The Main Issues Report Consultation runs from **21 July to 30 September 2015**.
During this time we will be running drop-in events in the six council areas of the region. For details, and to download the SESplan Main Issues Report in full, please visit: www.sesplan.gov.uk

Here you can also register on our consultation portal to submit your responses. Alternatively, you can contact us via the details below:
Address: SESplan, Civic Centre, Howden South Road, Livingston, EH54 6FF
Email: contactus@sesplan.gov.uk **Call:** 01506 282883

Follow us on Facebook and Twitter @sesplan

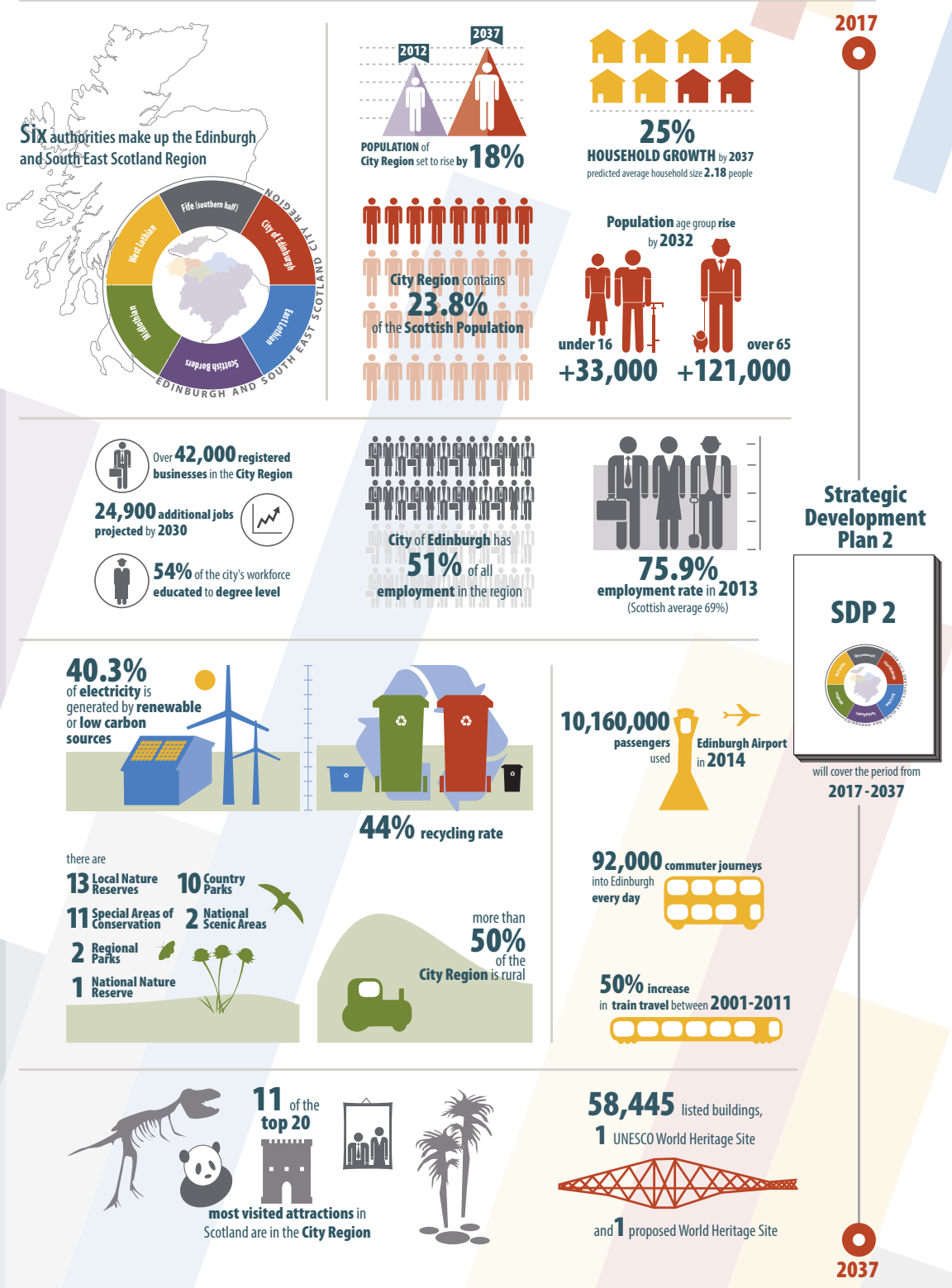
Copies of the SESplan Main Issues Report and an Easy Read Guide are also available to view in local libraries and member authority's planning offices.



Appendix 6b: Easy Read Guide

SESplan

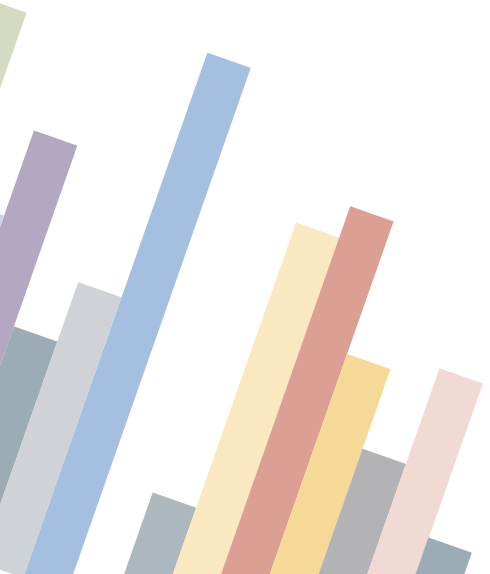
The Strategic Development Planning Authority
for Edinburgh and South East Scotland



SESplan Main Issues Report Easy Read Guide

SESplan Main Issues Report

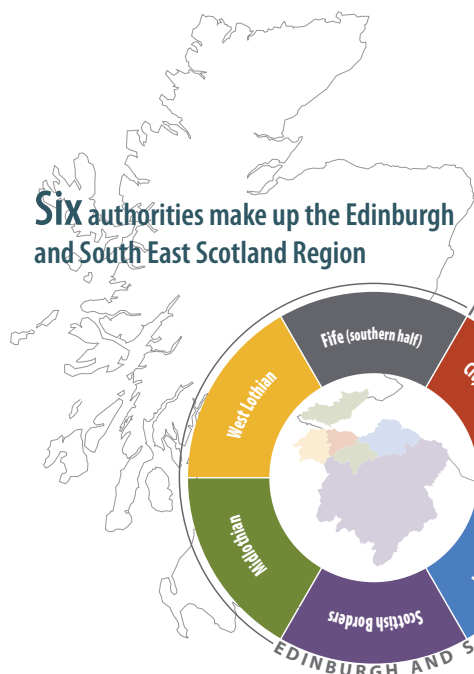
Easy Read Guide



Contents

About SEsplan	2
The Main Issues Report	2
Further information	2
The Main Issues Overview	3
The SEsplan Vision	4
The Spatial Strategy	5
A Place to do Business	7
Visitor Economy	7
Wind	8
Minerals	8
A Place for Communities	9
Housing in Edinburgh	10
Affordable Housing	11
Town Centres	11
Green Networks	12
A Better Connected Place	13
Funding Transport	13
Transport Priorities	14
Next Steps	15
More Information	16
Contact Us	16

About SESplan



SESplan is the Strategic Development Planning Authority for Edinburgh and South East Scotland. Our role is to prepare a Strategic Development Plan dealing with cross boundary planning issues such as housing, economic growth, green networks and infrastructure and provide a long term vision for the region.

SESplan is made up of six council areas. These are City of Edinburgh, East Lothian, Midlothian, West Lothian, the Scottish Borders and Fife (southern half). SESplan works in partnership with these member authorities.

The Strategic Development Plan is used to inform Local Development Plans produced by the member authorities. Local Development Plans are currently being prepared by all member authorities and these are responding to the direction set in the first Strategic Development Plan which came in to force in 2013.

The Main Issues Report

We are at the first official stage of preparing the second Strategic Development Plan where we produce a Main Issues Report. The Main Issues Report is a consultation document which highlights the key challenges facing the region over the next 20 years and presents a series of issues and options on how to address them.

It is important that we engage as many people as we can during the Main Issues Report consultation and receive responses on the issues as these responses will help inform the policies in the second Strategic Development Plan.

The Main Issues Report consultation takes place from **21 July 2015 until 30 September 2015**. You can give your responses on the issues during the consultation period by submitting a response via the SESplan [Consultation Portal](#).

Further information

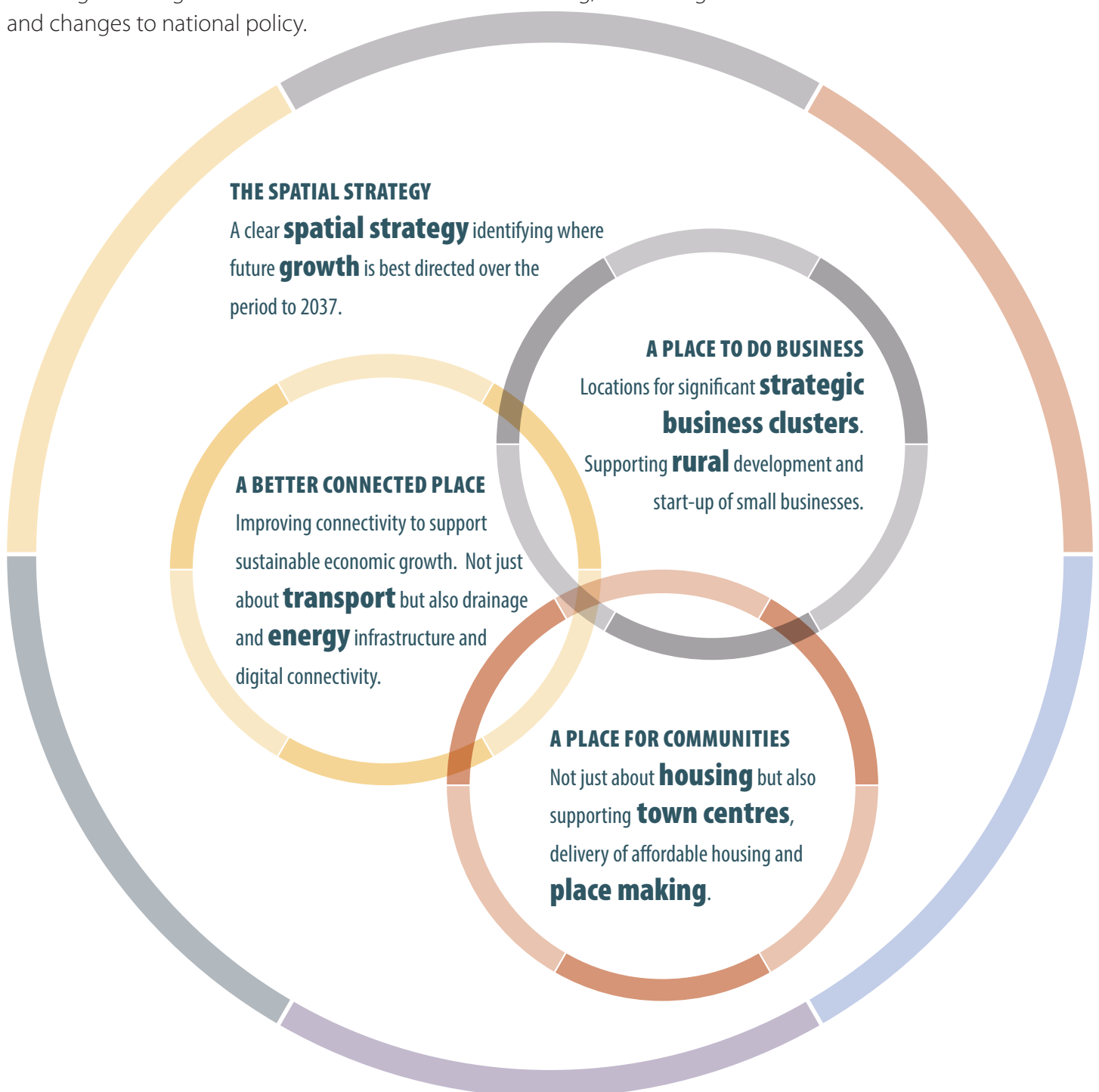
This is a summary document intended to give an overview of the key issues and questions raised in the Main Issues Report. If you would like further information the full version of the can be found [here](#) on our website. Copies can also be viewed in local libraries and at the planning offices of the member authorities. The Main Issues Report is supported by more detailed Technical Notes and background documents which are also available on the SESplan [website](#).

Consultation events will be running across the region and a full list can be found on the SESplan [website](#).

The Main Issues Overview

The full version of the Main Issues Report is split into chapters each looking at a different themes. The themes include the *Spatial Strategy*, *a Place to do Business*, *a Place for Communities* and *a Better Connected Place*. Several issues are considered under under each theme. The key issues considered are the 20 year vision for the region, the strategy for growth, locations of Significant Business Clusters, the Visitor Economy, Housing, Green Networks and Transport.

The themes raised within the Main Issues Report explore changes from the previous Strategic Development Plan. The themes highlight the challenges the region faces and are derived from monitoring, forecasting and changes to national policy.



The SESplan Vision

It is important Strategic Development Plans set a vision for how we hope the region will change for the better over a 20 year period. The aims of the policies in the Strategic Development Plan are to make this vision happen. We are updating our vision from the first Strategic Development Plan to be more focussed on the place and define what success looks like.



Options	Question
<p>a The preferred option for the vision is set out above. It aims to build on the strengths of Edinburgh and South East Scotland, address its challenges and set a clear direction for its future growth.</p>	<p>Do you support the preferred option, the alternative option or none of the options?</p>
<p>b The alternative option is that we maintain the vision of SDP1 which was 'By 2032 the Edinburgh City Region is a healthier, more prosperous and sustainable place which continues to be internationally recognised as an outstanding area in which to live, work and do business'.</p>	

The Spatial Strategy

This chapter looks at how the plan can best support sustainable economic growth in the region. Three options are presented with each addressing growth in a different way.

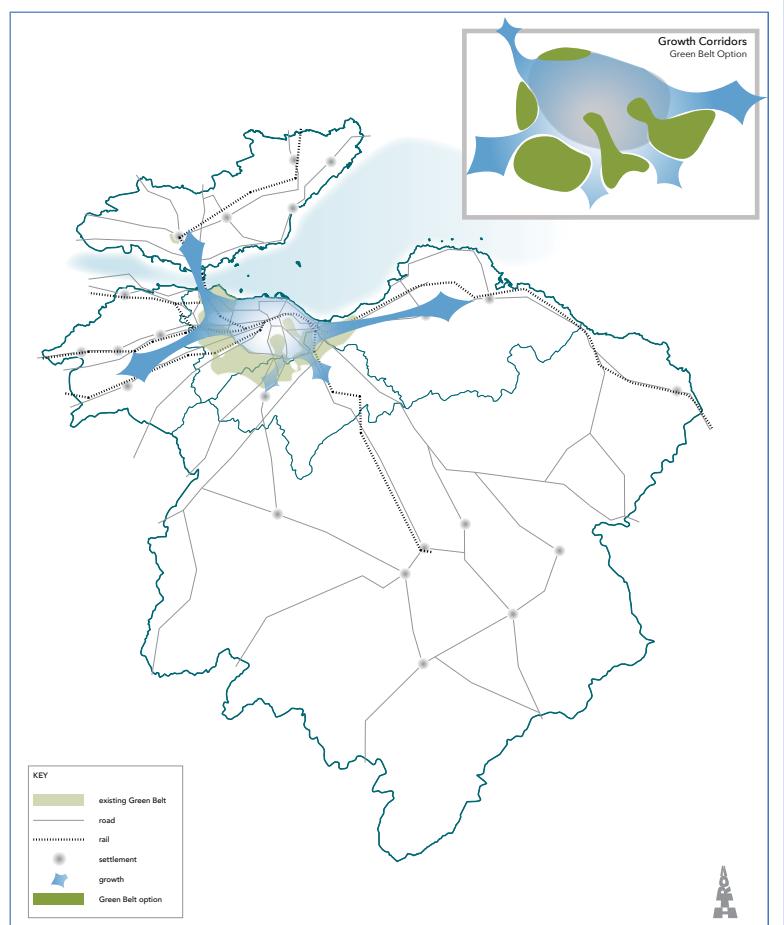
The spatial strategy of the first plan dispersed growth to thirteen Strategic Development Areas across the region. In particular, this approach dispersed a high proportion of Edinburgh’s demand for housing beyond the city and aimed to meet that demand in neighbouring local authorities.

As Edinburgh continues to experience a high need and demand for housing in the next plan, we think it would be appropriate to accommodate more of Edinburgh’s housing demand within the city. This will ensure more housing need and demand is met where it arises, helping to make best use of existing infrastructure, reduce the need to travel, contribute to addressing climate change and ensure economic growth is supported.

The preferred option is to change the Spatial Strategy to accommodate a higher proportion of development close to Edinburgh where there is greatest demand. The three options are set out below. Each of the options do not propose more or less growth than each other, just different ways it could be accommodated throughout the region:

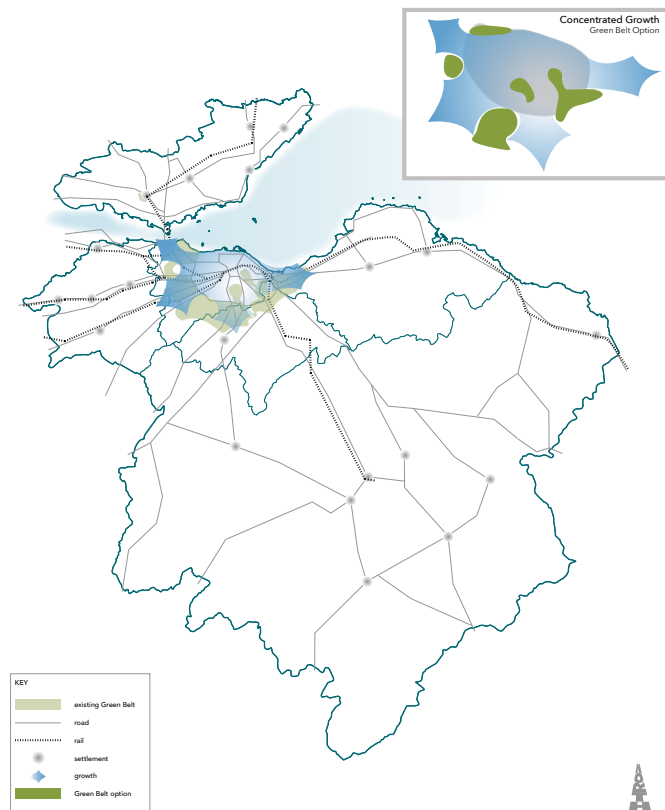
Option 3 Growth Corridors - Preferred

This option would include more development in Edinburgh and a smaller level of dispersal to neighbouring authorities than the current plan. This would likely be in south east and west of the city. The remaining dispersed development would be in towns close to Edinburgh that are accessible by public transport. This option aims to balance green belt changes against demand for housing in the city.



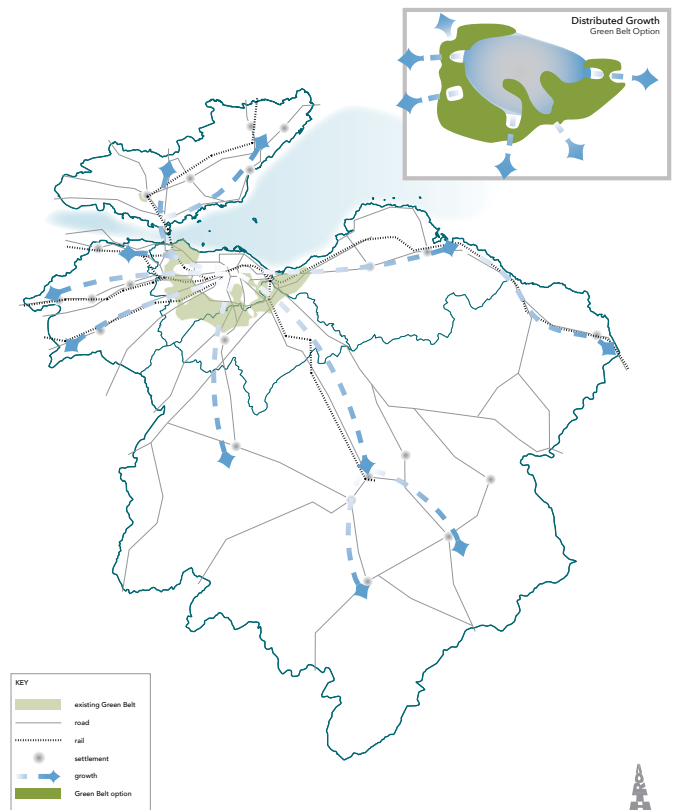
Concentrated Growth - Alternative Option 1

This option would see Edinburgh accommodate the majority of its own demand. Only a small proportion of housing would be dispersed to neighbouring authorities. This would require the greatest modification to the Edinburgh Green Belt.



Distributed Growth - Alternative Option 2

This option is similar to the strategy of the first Strategic Development Plan. This would mean growth spread further away from where demand is and potentially removed from public transport links. This strategy could result in a large increase in commuting back to Edinburgh for work.



Options

- a The preferred option is Option 3- Growth Corridors.
- b The alternative option is Option 1 – Concentrated Growth.
- c Option 3 – Distributed Growth.

Question

Do you support the preferred option, either of the alternative options or none of the options?

Further Reading:

- Main Issues Report issue B

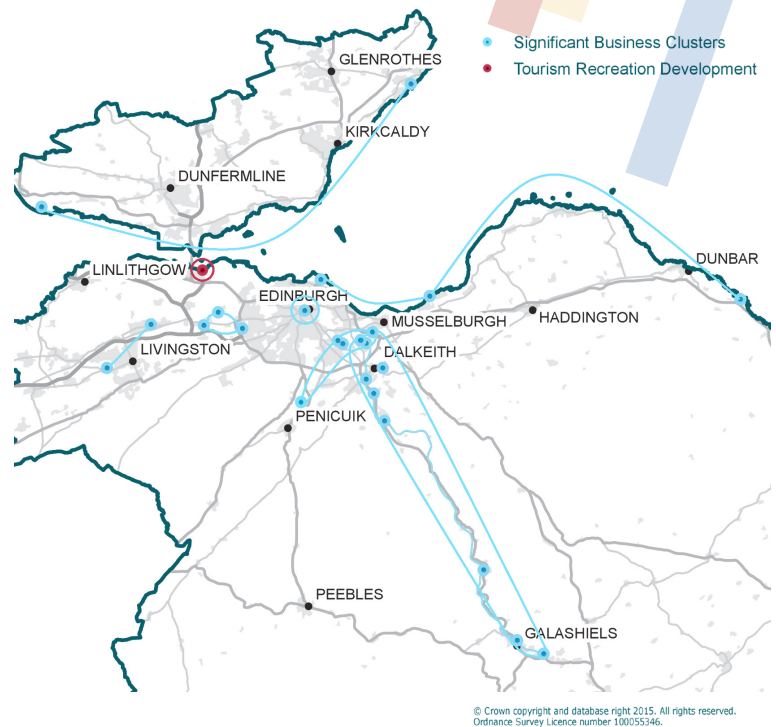
- Spatial Strategy Technical Note

A Place to do Business_____

This chapter deals with employment, tourism, minerals, waste and renewable energy.

The Main Issues Report proposes to maintain the approach of the first Strategic Development Plan on the supply and location of land for employment. This requires Local Development Plans to provide a range of marketable sites that meet the needs of business and industry including business parks and industrial estates.

Supporting business is important for a growing the economy and to create jobs for the people that live in the area. In the next Strategic Development Plan it is proposed to identify locations of significant business clusters. These are groupings of similar or complementary businesses with a particular impact on the region's economy. The aim of identifying these areas is to ensure they are supported by infrastructure and housing and to ensure they are able to grow.



Options

- a The preferred option is to identify significant business clusters which reflect the different economies of the city, towns and rural areas in the region.
- b The alternative option is to limit the identification of business clusters to Enterprise Areas, National Renewable Infrastructure Plan sites and groups of industries identified as growth sectors by Scottish Enterprise.

Question

Do you support the preferred option, the alternative option or none of the options?

Visitor Economy_____

The region has a large tourism industry and it is a major contributor towards jobs and the region's economy. It is proposed to safeguard national and regionally important tourism developments to help grow tourism further.

Option

- a The preferred option is for Local Development Plans to safeguard nationally and regionally important tourism and recreation development and emerging tourism opportunities.

Question

Do you support the preferred option?

Wind

Renewable energy generation such as wind can help the region meet the Scottish Government's targets of generating 100% gross electricity usage from renewable sources by 2020. There is potential for further onshore wind development in the region but many of the most suitable and least harmful sites have already been developed. The next Strategic Development Plan proposes to include a spatial framework diagram for onshore wind. This will set out broad areas where wind turbines may be acceptable subject to detailed Local Development Plan policies and taking into account other considerations such as landscape capacity.

Question

Do you support the emerging content of Strategic Development Plan 2 relating to wind energy?

Minerals

Minerals are essential to economic growth, providing materials for construction, manufacturing and the energy sector.

Options

- a The preferred option is to continue the approach of the first plan and identify areas of search for aggregate minerals and surface coal mining areas or where appropriate specific sites. There will be no spatial guidance on the location of onshore oil and gas installations.
- b The alternative option to identify broad areas of search for aggregate minerals and surface coal mining across of the region based on environmental factors. Areas will be further defined by Local Development Plans.

Question

Do you support the preferred option, the alternative option or none of the options?

Further Reading:

- Main Issues Report issues C, D and E
- Minerals Technical Note
- Economy Technical Note
- Waste Technical Note

A Place for Communities

This chapter looks at the predicted number of houses required over the 20 year plan period, and where the need and demand for houses occurs. It also considers affordable housing needs, town centres and green networks.

The region is expected to be one of the fastest growing areas in Scotland in terms of population and household growth. In order to accommodate this growth we will need more housing. Three economic scenarios are considered as the basis for estimating the number of new houses which will be required over the next twenty years. The scenarios are:

- 1 Steady Economic Growth (based on steady economic upturn) – the Preferred option;
- 2 Increasing Economic Activity (based on more high and low skilled jobs); and
- 3 Strong Economic Growth (based on the region becoming one of the fastest growing in the uk).

Plan Period	Option 1 (steady) - Preferred		Option 2 (increasing)		Option 3 (strong)	
	number of houses					
	Total	Annual	Total	Annual	Total	Annual
2012-2029	102,800	5,700	120,300	6,700	138,000	7,700
2030-2037	31,800	4,000	43,800	5,500	56,300	7,000

Options

The option we prefer is to base the housing numbers on economic growth continuing at a steady pace. This provides the housing figures for Option 1. Options 2 and 3 set higher figures but these are considered unrealistic for a number of reasons, including issues with delivery.

Question

As the basis for deriving the housing supply targets and housing land requirements within Strategic Development Plan 2, do you support the preferred option, either of the alternative options or none of the options?

Housing in Edinburgh

As indicated in the Spatial Strategy, a high proportion of housing need and demand comes from Edinburgh. This is one of the key issues for SESplan. Under the existing Strategic Development Plan Edinburgh is expected to meet a lower proportion of its own need with housing distributed elsewhere within the region. For the next Strategic Development Plan the proportion of housing need and demand met in Edinburgh is being reconsidered.

Three options put forward are:

- 1 Edinburgh meets all of its own need;
- 2 Edinburgh meets an increased proportion of its own need compared to the existing Strategic Development Plan - the Preferred option; and
- 3 Edinburgh meets the same proportion of its own need, as under the existing Strategic Development Plan.

Plan Period	Option 1 (all)		Option 2 (increased) - Preferred		Option 3 (same)	
	number of houses					
	Total	Annual	Total	Annual	Total	Annual
2012-2029	59,700	3,300	41,800	2,300	36,400	2000
2030-2037	21,800	2,700	15,300	1,900	13,100	1,600

We consider that Edinburgh should meet an increased proportion of its own need and demand. This would allow housing to be built closer to where the need and demand arise without placing significant additional pressure on existing infrastructure in the city. If Edinburgh was to continue to meet the same, lower proportion, this is likely to encourage less sustainable travel.

In the second Strategic Development Plan the spatial strategy, the amount of housing proposed and the proportion accommodated in Edinburgh will all be clearly linked. At the Main Issues Report stage we are seeking your views on these as individual issues. This is to allow you the greatest chance to shape and influence the whole plan.

Options

- a The preferred option is option 2 - Edinburgh meets an increased proportion of its own housing need.
- b An alternative is option 1 - Edinburgh meets all of its own housing need.
- c Another alternative is option 3 - Edinburgh meets a lower proportion of its own housing need.

Question

Do you support the preferred option, either of the alternative options or none of the options?

Affordable Housing

The provision of affordable housing is a major issue for the city region. There remains a substantial difference between the need and demand for affordable housing and the rate at which it is being built. It is expected that over half of the total need for housing to the end of the plan will be for affordable housing. Over the past five years the number of affordable houses completed as a share of all houses built has been significantly lower than requirements.

Options

- a The preferred option is to direct Local Development Plans to require a 25% minimum of the total number of houses provided on a site to be affordable but allow plans to vary this where justified by local needs.
- b The alternative option is for Local Development Plans to seek minimum levels of affordable housing above 25% to meet identified need with no flexibility for local circumstances.

Question

Do you support the preferred option, the alternative option or none of the options?

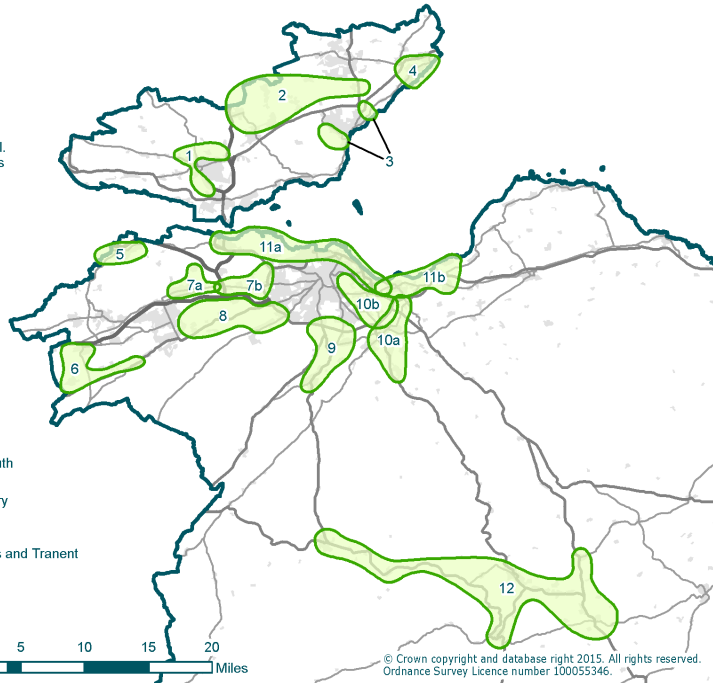
Town Centres

It is proposed to retain a town centre first policy, whereby retail and certain commercial uses are directed to town centres. It is proposed to extend this to include a wider range of uses. Other uses which will be encouraged in town centres including office, leisure and housing in order to create vibrant town centres.

Further Reading:

- [Housing Need and Demand Assessment 2](#)
- [Housing Land Technical Note](#)
- [Spatial Strategy Technical Note](#)
- [Main Issues Report issues F, G, H and I](#)

- 1- Dumfermline Development Area
- 2- Ore Valley Area & settlement
- 3- Kircaldy Development Areas
- 4- Levenmouth - river & coast
- 5- Linlithgow area, inc. Union Canal, Rivert Avon and links to Whitecross
- 6- Whitburn to Fauldhouse and the settlements east along the Breich Valley
- 7a- Broxburn area inc. Uphall, Winchburgh and A8 corridor west
- 7b- West Edinburgh to Newbridge including A8 corridor west
- 8- East Calder area, incl. A71 corridor east to Edinburgh
- 9- Penicuik to Fairmilehead, incl. Bilston, Straiton, Hillhead, Burdiehouse and Pentland Hills fringe.
- 10a- Gorebridge to Dalkeith, inc. A7/Borders Development Area
- 10b- Holyrood to Dalkeith, inc. South East Edinburgh SDA
- 11a- Forth Coast- South Queenferry to Musselburgh
- 11b- Forth Coast- Musselburgh to Port Seton and inland to Blindwells and Tranent
- 12- Central Borders



Green Networks

A range of green spaces, natural landscapes, woodlands, coastline, waterways and outdoor recreation contribute towards the success of the region. They add to the area's character and enhance people's quality of life and sense of place. They support healthy lifestyles, provide for recreation and help biodiversity to flourish. It is essential we protect and enhance this network of green spaces.

Options

- a The preferred option is to identify priority areas for green networks in the Strategic Development Plan.
- b The alternative option is to support a strategic green network but with the identification, prioritisation and development undertaken by Local Development Plans.

Question

Do you support the preferred option, the alternative option or none of the options?

Further Reading:

- Main Issues Report issue J
- Green Network Technical Note
- Spatial Strategy Technical Note

A Better Connected Place_____

This chapter looks at how we can encourage more people to walk, cycle or use public transport and ensure that development supports improved public transport and infrastructure.

The main policy on transport in the first Strategic Development Plan encourages Local Development Plans to guide development to areas which are currently accessible through walking, cycling and public transport or to areas which can be made accessible by these modes of travel. The preferred option in the next plan is for greater emphasis to be placed on locating development near public transport and that development is planned to encourage walking and cycling. It is also proposed to promote higher densities of housing close to public transport networks and include a regional walking and cycling network in the plan.

Option

- a The preferred option is to amend parts of Policy 8 in the first plan to better direct development areas that support walking, cycling and public transport.
- b The alternative option is to retain Policy 8 of the first plan without modification.

Question

Do you support the preferred option, the alternative option or none of the options?

Funding Transport Infrastructure_____

Funding for new transport infrastructure such as new stations and roads is a major issue. It is considered that when transport improvements benefit more than one local authority, it would be advantageous to fund improvements in partnership.

Option

- a The preferred option for member authorities is to work towards developing sub-regional development contribution framework. This could pool contributions from a number of authorities to support strategic infrastructure with benefits to the wider area.
- b The alternative option is to maintain the current position and seek developer contributions on a case by case basis.

Question

Do you support the preferred option, the alternative option or none of the options?

Transport Priorities

There are many instances where improvements are required to existing transport infrastructure to bring forward new development or to reduce existing issues such as traffic congestion. The preferred option in the Main Issues Report is to prioritise strategic transport requirements in partnership with other organisations to help bring forward this infrastructure. A transport appraisal will be prepared to inform the next plan which will provide details of the strategic transport priorities. An initial list of priorities is shown below:

Intervention	Purpose
A720 Improvements	Minimise additional delay.
East Linton Rail Station, Reston Rail Station and East Lothian Link Improvements	Improve access and capacity to support future development.
Edinburgh Orbital Bus Routes	Promote sustainable travel
Edinburgh Tram Extensions	Promote sustainable travel
Edinburgh Waverley Improvements	Increase capacity
Fully Duelled A1 Edinburgh – Newcastle	Increase access, safety and economic growth
Levenmouth Rail Link	Support planned development and access to jobs
Strategic Walking and Cycling Network	Support sustainable travel
Winchburgh Rail Station and M9 Junction	Required by planned and future development

Options

- a The preferred option is for SDP2 to prioritise infrastructure to ensure delivery of key projects to maximise economic potential, enable planned development and increase accessibility by sustainable transport networks.
- b The alternative option is to identify a long list of strategic transport infrastructure priorities without prioritisation.

Question

Do you support the preferred option, the alternative option or none of the options?

Further Reading:

- [Main Issues Report issues K and L](#)
- [Spatial Strategy Technical Note](#)

Thank you for reading through the SESplan Main Issues Report summary.

If you want further information on the issues raised you can read the Main Issues Report in full and reference the supporting documents via the further reading links.

You can respond to the questions raised here via the [SESplan Consultation Portal](#) available on our webpage.

All responses must be complete by 30 September 2015.

Next Steps

Following the close of consultation on the 30 September, we will use the responses to help us prepare the second Strategic Development Plan. The expected timetable for preparing the next plan is set below:

SUMMER 2015	<ul style="list-style-type: none"> • Publication of Main Issues Report • Consultation of Main Issues Report
AUTUMN 2015	<ul style="list-style-type: none"> • Analysis of Main Issues Report 2 Consultation Responses
SPRING / SUMMER 2016	<ul style="list-style-type: none"> • Publication of Proposed Plan and Supporting Documents • Period for Representations
SUMMER / AUTUMN 2016	<ul style="list-style-type: none"> • Analysis of Representations
SPRING 2017	<ul style="list-style-type: none"> • Submission of Proposed Plan, Supporting Documents and Representations Received to Scottish Ministers
AUTUMN / WINTER 2017	<ul style="list-style-type: none"> • Examination of Proposed Plan
SPRING / SUMMER 2018	<ul style="list-style-type: none"> • Approval of Strategic Development Plan 2

More Information

If you would like more information and details on the subjects discussed here, please refer to the following documents:

The Main Issues Report;

The Interim Environmental Report;

The Monitoring Statement;

The Equalities and Human Rights Impact Assessment;

The Spatial Strategy Technical Note;

The Economy Technical Note;

The Housing Land Technical Note;

The Green Network Technical Note;

The Minerals Technical Note; and

The Waste Technical Note.

All documents are available on the website
www.sesplan.gov.uk

Contact Us

Email: contactus@sesplan.gov.uk

Phone: 01506 282883

Or by post: SESplan
Civic Centre
Howden Road South
Livingston
EH54 6FF





SESplan

The Strategic Development Planning Authority
for Edinburgh and South East Scotland



HAPPY TO TRANSLATE

সহজ ভাষায় অনুবাদ করুন
MOZEMY PRZETŁUMACZYĆ 简单易懂翻译

You can get this document on tape, in Braille, large print and various computer formats if you ask us. Please contact Interpretation and Translation Service (ITS) on 0131 242 8181 and quote reference number 15-0451. ITS can also give information on community language translations. You can get more copies of this document by calling 0131 529 3500.